

6 Component Location

6.3 Change Components

6.3.13 X-ray Generator

Remark: The new generator is shipped out with an angle. For easier replacement do not disassemble this angle on C-arm. It's better to disassemble the angle from the new generator (no need for mechanical adjustment of generator).
There is no electrical adjustment for the generator necessary, because adjustment data's are stored electronic block from generator.

Preparation: look for a box or equal ca. 25cm high for easier handling by dismounting generator

Place this box below the generator.

Drive the C-arm ca. 3cm higher then the box.

Turn off the machine, disconnect from Power.

Warning: by disconnecting connectors from generator dangerous voltages are touchable, if power is not disconnected.

Lock all brakes!

Warning: mechanical hazards by dismounting generator can appear, if brakes are not locked.

Remove rubber bumper (4 screws).

Remove upper generator cover (4 screws) and grounding on cover.

If DAP is installed, remove DAP unit.

Remove all connectors coming out from C-arm.

Remove B355/B356 electronic block.

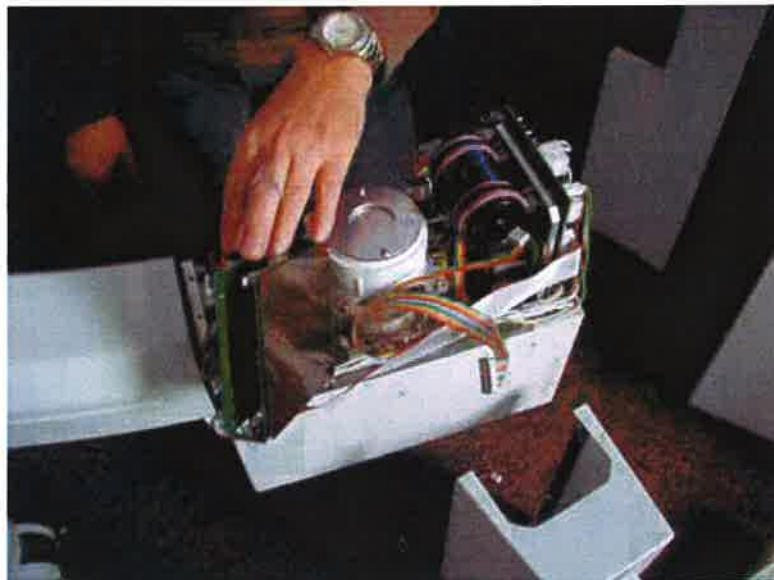


Figure 184 Maxiplus 3000 removal

Remove Collimator unit.

open two nuts M16 and dismount generator block.

6 Component Location

6.3 Change Components

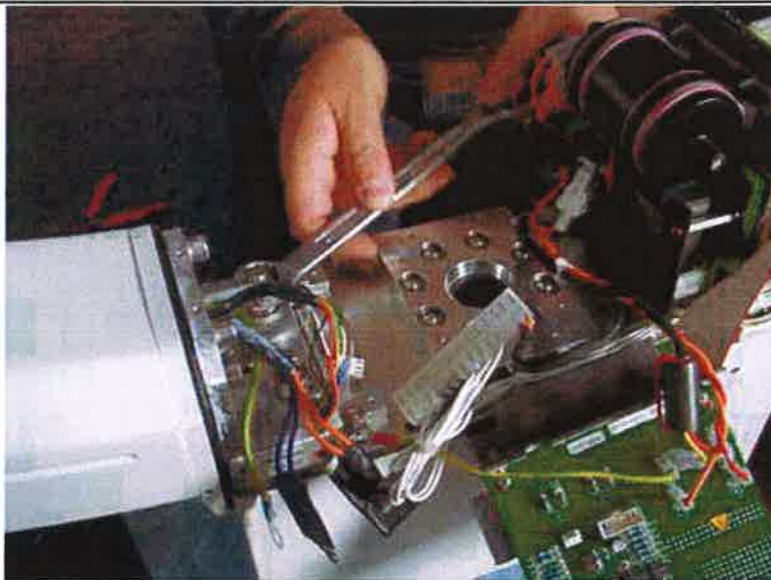


Figure 185 Demounting from C-arm

You can set it now on the box.

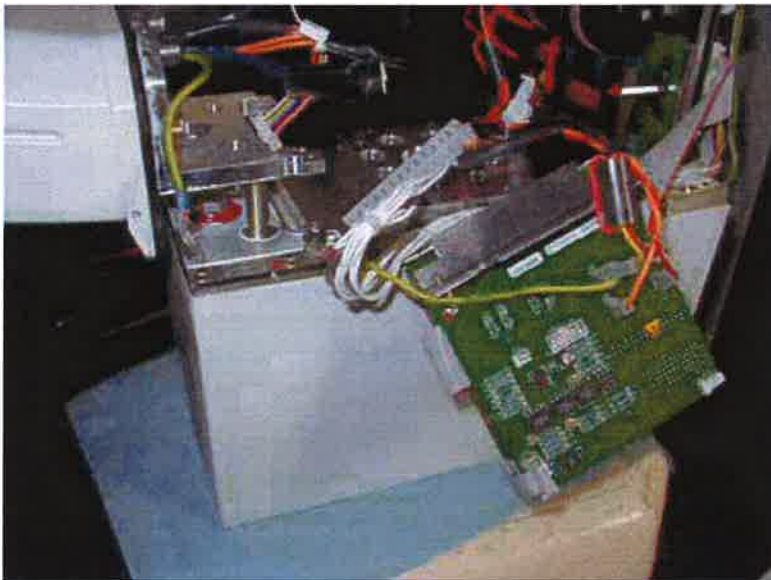


Figure 186 Demounting from C-arm

New generator: remove metallic angle and dismount electronic block.

Mount new generator block with two M16 nuts.

Mount Electronic block. Connect cables from C-arm.

Mount Collimator unit.

If exists: mount DAP Unit

Check seal from skin space holder

If not exists or damaged mount new seal

6 Component Location

6.3 Change Components

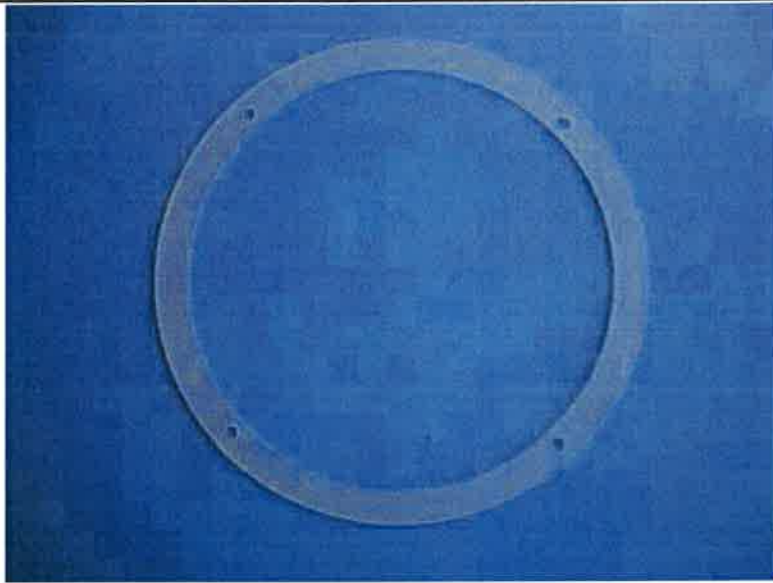


Figure 187 seal 00-419156-01 for skin space holder w/o Laser X-ray

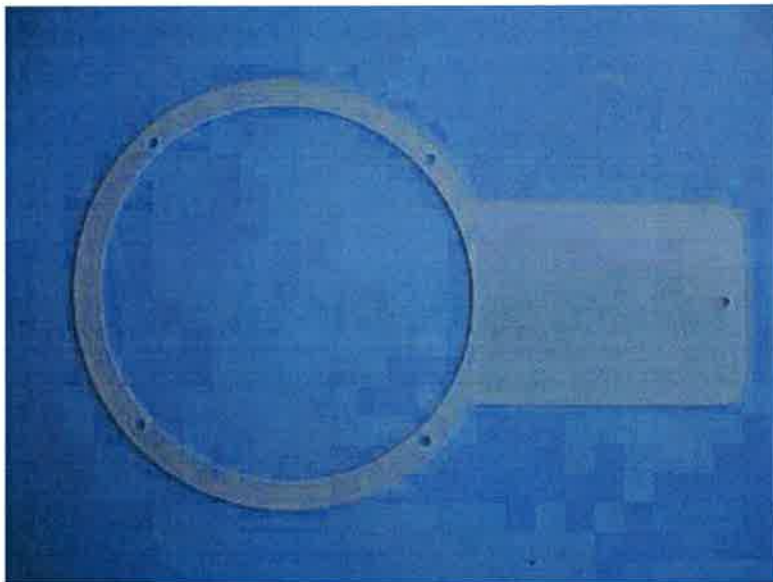


Figure 188 seal 00-419155-01 for skin space holder with Laser X-ray

6 Component Location

6.3 Change Components

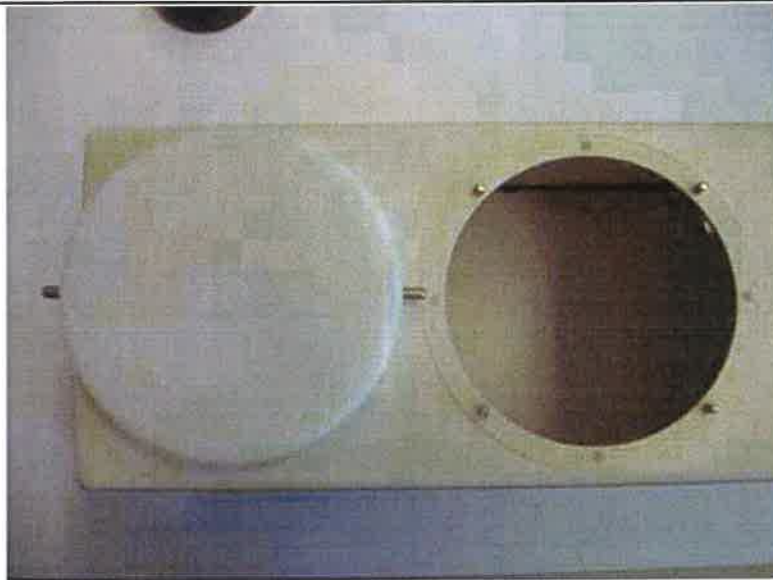


Figure 189 Assembling seal

Connect power cable and turn the machine on.

If a B356 Software error comes up, B356 software and device software are not equal. In this case make a Softwareupdate to the latest software, which is installed on the system. In this case B356 will be automatically get the right software version (see also: [Software Update](#)).

Make a calibration for the collimator unit ([see Collimator adjustment](#)).

Turn the machine off.

Fix cabling with lacing cords.

Mount the top cover from generator and the grounding of the cover.

Mount new seal tape around top cover

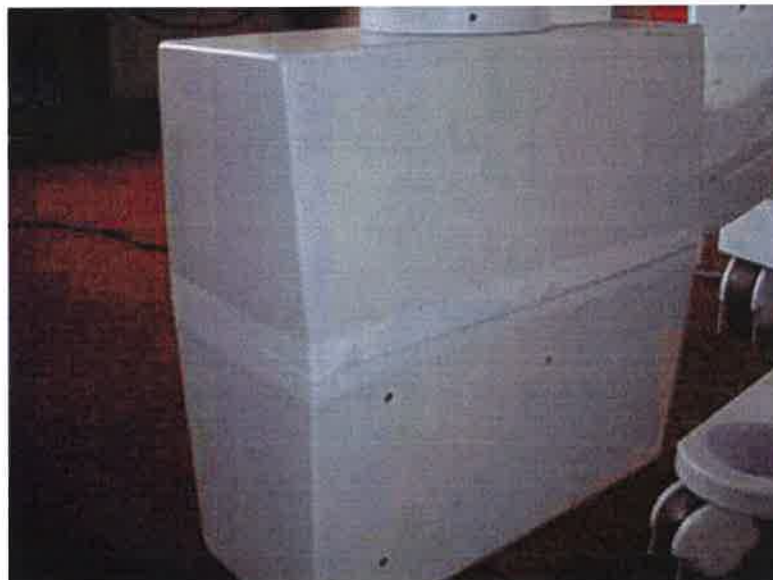


Figure 190 seal tape 00-906419-01

Mount rubber bumper.